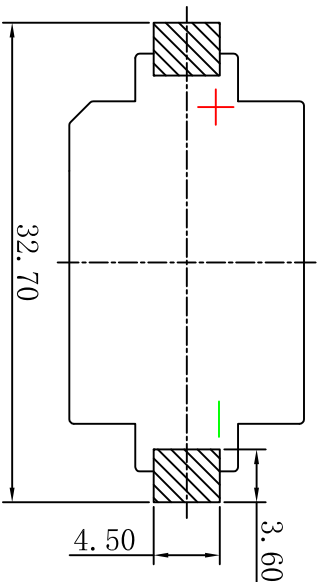
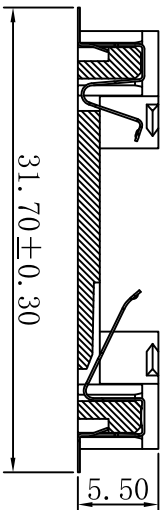
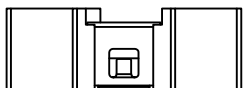
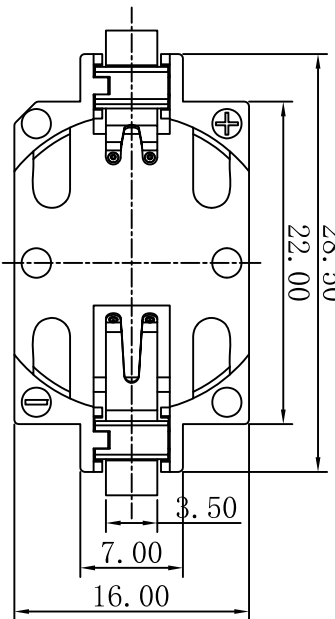


**RoHS Compliant**

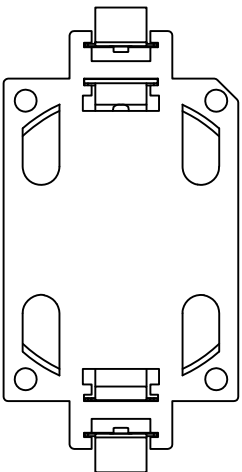
\*Due To Technical Progress, All The Information Provided Is Subject To Change Without Prior Notice.

Rev No	Revision note	Date	Signature	Checked
A/0	NEW DRAWING	DEC. 07. 2020		

28.50  
22.00



Recommended P. C. B Layout (Top View)  
(PCB BOARD TOLERANCE ± 0.05)



**Electrical:**

Contact Resistance: 30mΩ Max.  
Insulation Resistance: 1000MΩ Min.  
Withstand Voltage: 500V AC for 1 Min.

**Mechanical:**

Contact Material: Phosphor Bronze.  
Contact Plating: Au or Sn Over Ni.  
Insulator Material: Polyester (UL94V-0).  
Standard: LCP (White).

**Environmental:**

Operation Temperatures: -25°C to +85°C.  
Max. Processing Temperature: +230°C for 30-60seconds  
+260°C for 10seconds

**Ordering Code:**

7406-2032M XX

XX 01

<p>Contact Plating G0=Gold Flash G1=3u" Gold G2=5u" Gold S0=Gold/Flash/Tin S1=3u" Gold/Tin S2=5u" Gold/Tin SN=Tin NT=Nickel</p>	<p>Insulator Material A=BK-PBT B=BK-PA66 C=BN-PPA D=BK-PPA E=BN-PPS F=BK-PPS G=WH-LCP H=BK-LCP</p>	<p>Packing A=Tray B=Box R=Tape&amp;Reel</p>
---	--	---

THIS DRAWING IS A CONTROLLED DOCUMENT

TOLERANCES UNLESS OTHERWISE SPECIFIED

0	PLC	±	0.30
1	PLC	±	0.25
2	PLC	±	0.20
3	PLC	±	0.10
4	PLC	±	3°

AWD DATE  
MIKE DEC. 07. 2020

CHK DATE  
KAIYUAN XU DEC. 07. 2020

AWD	DATE	
MIKE	DEC. 07. 2020	
PETER	DEC. 07. 2020	
UNITS	SCALE	SIZE
MM	2 : 1	A4
CODE CODE	FILE PATH	
594309442	A/D/YTCOTZ/BS/2032	

YTCO TECHNOLOGY  
HTTP://WWW.YTCO.CO

TITLE  
CR2032-6/SMT

PART NO.	7406-2032MXXXX01
DRAWING NO.	7406-2032
SHEET	1 OF 1
REV	A